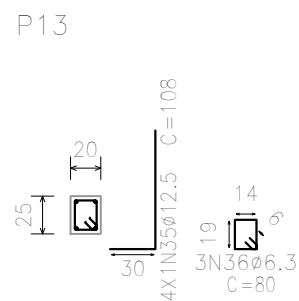
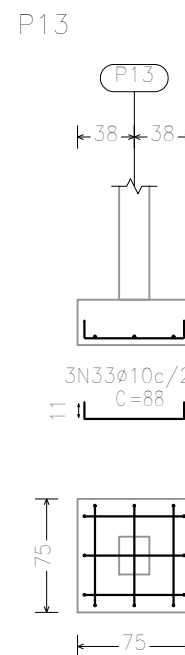
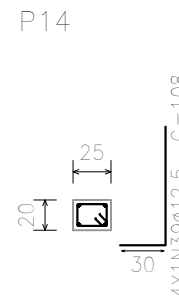
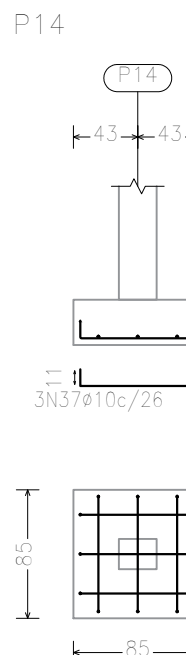
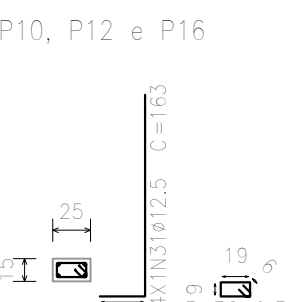
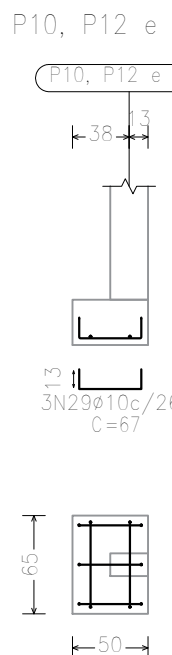
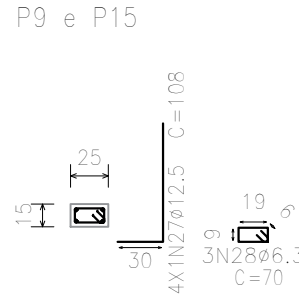
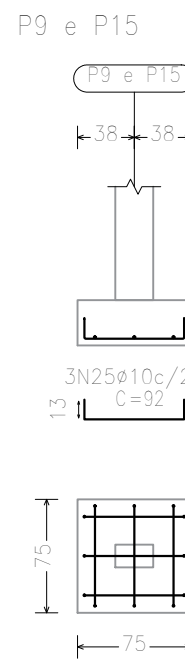
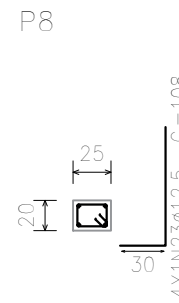
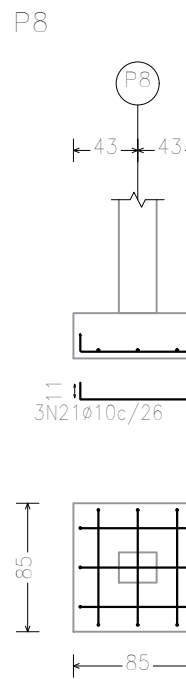
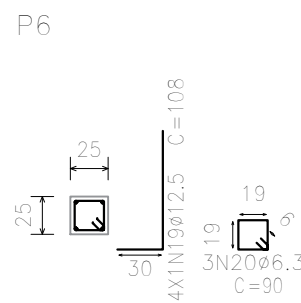
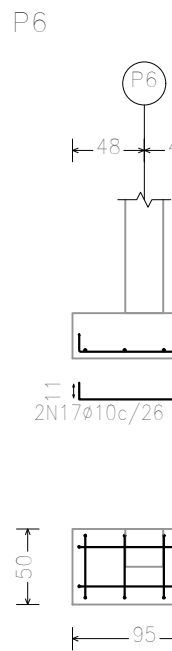
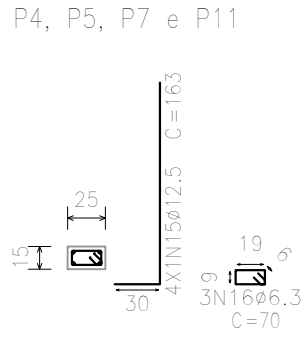
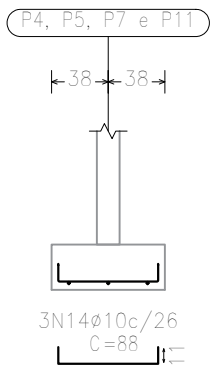
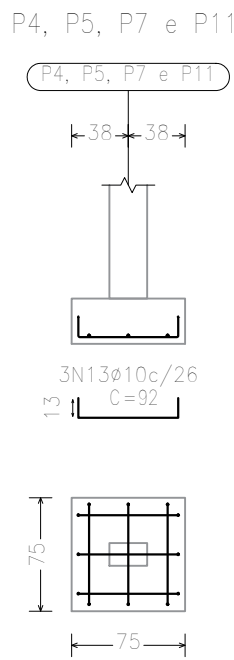
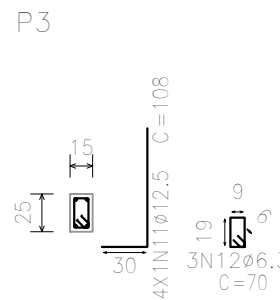
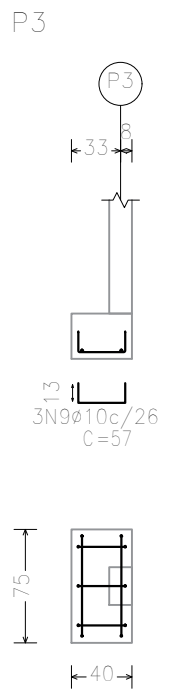
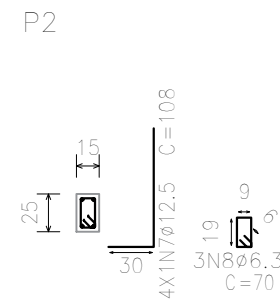
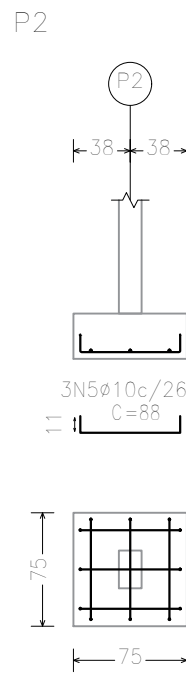
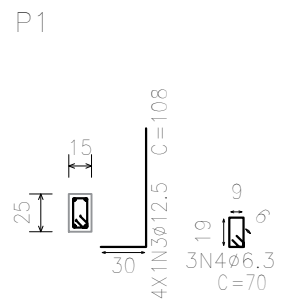
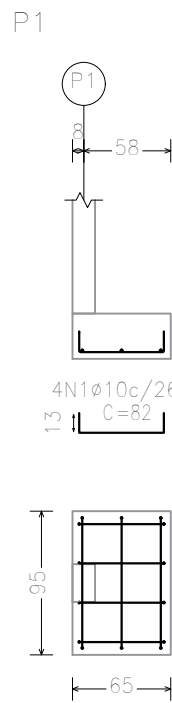
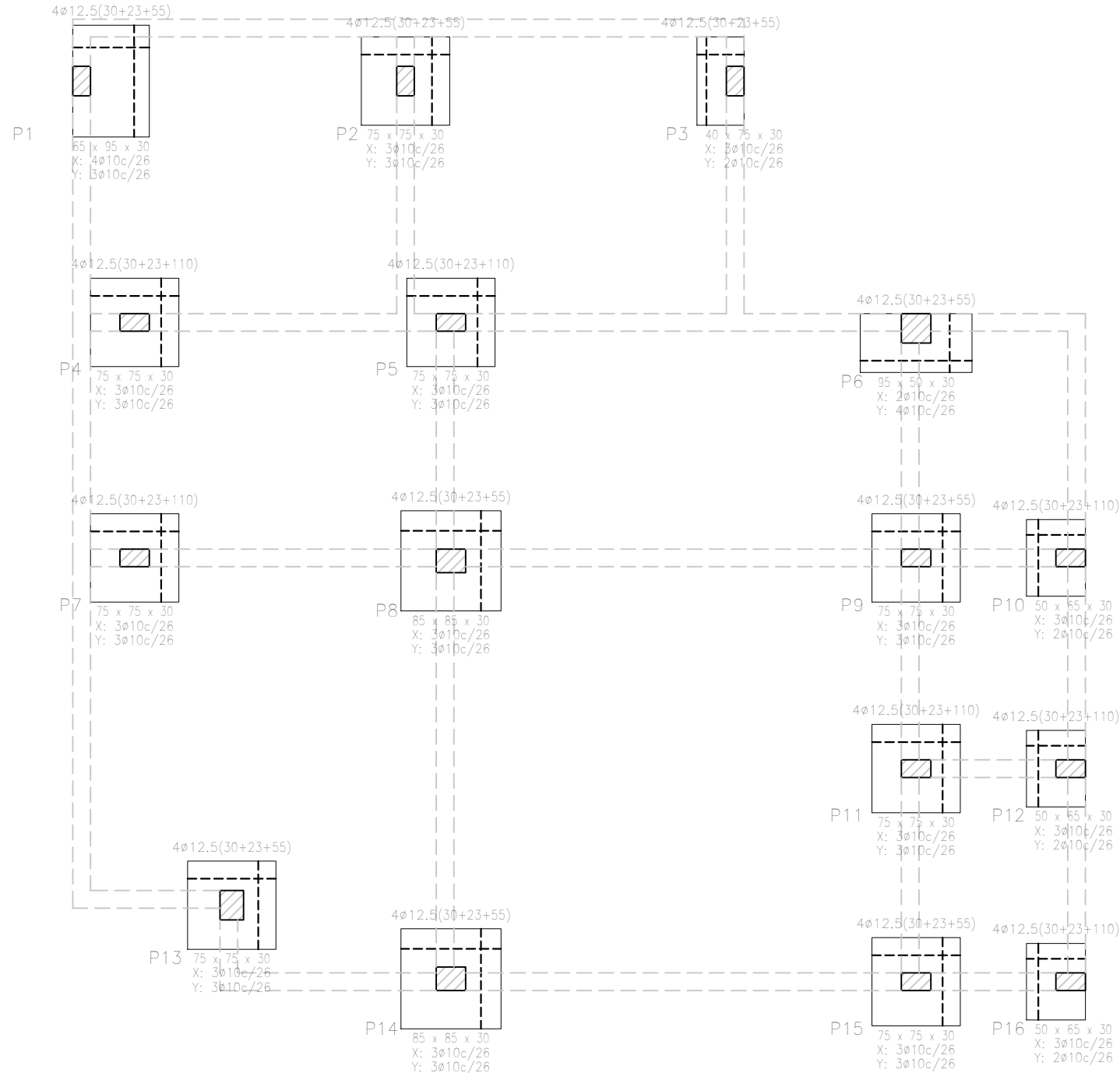


Fundação Detalhamento fundação Concreto: C25, em geral Escala: 1:50	Resumo Aço	Comp. total	Peso+10%	Total
	Fundação	(m)	(kg)	
	Detalhamento fundação			
	CA-50	96,3	35,1	
	Ø10	80,8	55	
	Ø12,5	84,5	90	

OBS: Arranques de pilares são orçados junto com o pilar.

QUADRO DE ELEMENTOS DE FUNDACÃO				
Referências	Dimensões (cm)	Altura (cm)	Armadura (inf. X)	Armadura (inf. Y)
P1	65x95	30	4Ø10c/26	3Ø10c/26
P2	75x75	30	3Ø10c/26	3Ø10c/26
P3	40x75	30	3Ø10c/26	2Ø10c/26
P4, P5, P7, P9, P11 e P13	75x75	30	3Ø10c/26	3Ø10c/26
P6	95x50	30	2Ø10c/26	4Ø10c/26
P8	85x85	30	3Ø10c/26	3Ø10c/26
P10, P12 e P16	50x85	30	3Ø10c/26	2Ø10c/26
P13	75x75	30	3Ø10c/26	3Ø10c/26
P14	85x85	30	3Ø10c/26	3Ø10c/26



Elemento	Pos.	Diam. Q.	Dob. (cm)	Refo (cm)	Dob. (cm)	Comp. (cm)	Total (cm)	CA-50	CA-60		
P1	1	Ø10	4	13	66	11	88	328	2,0		
	2	Ø10	3	11	86	11	108	294	2,0		
	3	Ø12,5	4	30	78		108	432	4,2		
	4	Ø6,3	3		70		70	210	0,5		
Total+10%									8,6		
P2	5	Ø10	3	11	66	11	88	264	1,6		
	6	Ø10	3	13	66	13	92	276	1,7		
	7	Ø12,5	4	30	78		108	432	4,2		
	8	Ø6,3	3		70		70	210	0,5		
Total+10%									8,8		
P3	9	Ø10	3	13	66	13	92	276	1,7		
	10	Ø10	2	13	66	13	92	184	1,1		
	11	Ø12,5	4	30	78		108	432	4,2		
	12	Ø6,3	3		70		70	210	0,5		
Total+10%									9,9		
P4=P5=P7=P11	13	Ø10	3	13	66	13	92	276	1,7		
	14	Ø10	3	11	66	11	88	264	1,6		
	15	Ø12,5	4	30	133		163	652	6,3		
	16	Ø6,3	3		70		70	210	0,5		
Total+10%									11,1		
P6	17	Ø10	2	11	86	11	108	276	1,3		
	18	Ø10	4	13	41	13	67	268	1,7		
	19	Ø12,5	4	30	78		108	432	4,2		
	20	Ø6,3	3		80		90	270	0,7		
Total+10%									8,9		
P8	21	Ø10	3	11	76	11	98	294	1,8		
	22	Ø10	3	11	76	11	98	294	1,8		
	23	Ø12,5	4	30	78		108	432	4,2		
	24	Ø6,3	3		80		80	240	0,6		
Total+10%									9,2		
P9=P15	25	Ø10	3	13	66	13	92	276	1,7		
	26	Ø10	3	11	86	11	88	264	1,6		
	27	Ø12,5	4	30	78		108	432	4,2		
	28	Ø6,3	3		70		70	210	0,5		
Total+10%									17,6		
P10=P12=P16	29	Ø10	3	13	41	13	67	201	1,2		
	30	Ø10	2	13	56	13	82	164	1,0		
	31	Ø12,5	4	30	133		163	652	6,3		
	32	Ø6,3	3		70		70	210	0,5		
Total+10%									29,7		
P13	33	Ø10	3	11	66	11	88	264	1,6		
	34	Ø10	3	13	66	13	92	276	1,7		
	35	Ø12,5	4	30	78		108	432	4,2		
	36	Ø6,3	3		80		80	240	0,6		
Total+10%									8,9		
P14	37	Ø10	3	11	76	11	98	294	1,8		
	38	Ø10	3	11	76	11	98	294	1,8		
	39	Ø12,5	4	30	78		108	432	4,2		
	40	Ø6,3	3		80		80	240	0,6		
Total+10%									9,2		
									Ø6,3	8,8	0,0
									Ø10	54,1	0,0
									Ø12,5	90,8	0,0
									Total	95,7	0,0



Estado do Rio Grande do Sul  
**MUNICÍPIO DE SÃO MARTINHO**  
CNPJ 87.813.097/0001-98

CONTEÚDO:  
Detalhamento de Fundações

ENDEREÇO:  
Av Geert Lorenz, nº 1404,  
Centro, São Martinho - RS

Proprietário:

Jeancarlo Hunhoff  
Prefeito Municipal

Responsável Técnico:

Ismael A. Faggon - Engenheiro Civil  
CREA-RS 231384

Escala:

1:50

Área:

62,81 m²

Data:

Mar/2022

Desenho:

Ismael

Prancha:

06/13